

TM 11-6125-226-34P

**TECHNICAL MANUAL**

**DIRECT SUPPORT AND GENERAL  
SUPPORT MAINTENANCE REPAIR PARTS  
AND SPECIAL TOOLS LISTS  
(INCLUDING DEPOT MAINTENANCE REPAIR  
PARTS AND SPECIAL TOOLS)**

**FOR  
MOTOR GENERATOR  
PU-33A/C  
(NSN 6125-00-556-8623)**

---

**HEADQUARTERS, DEPARTMENT OF THE ARMY**

**MAY 1977**

DIRECT SUPPORT AND GENERAL SUPPORT MAINTENANCE  
REPAIR PARTS AND SPECIAL TOOLS LISTS  
(INCLUDING DEPOT MAINTENANCE REPAIR PARTS AND SPECIAL TOOLS)  
FOR  
MOTOR GENERATOR PU-33A/C  
(NSN 6125-00-556-8623)

**Current as of 4 February 1977**

**REPORTING OF ERRORS**  
You can improve this manual by recommending improvements using DA Form 2028-2 (Test) located in the back of the manual. Simply tear out the self-addressed form, fill it out as shown on the sample, fold it where shown, and drop it in the mail.  
If there are no blank DA Form 2028-2 (Test) in the back of your manual, use the standard DA Form 2028 (Recommended Changes to Publications and Blank Forms) and forward to the Commander, US Army Electronics Command, ATTN: DRSEL-MA-Q, Fort Monmouth, New Jersey 07703.  
In either case a reply will be furnished direct to you.

Table of Contents

	Page	Illustration Figure
SECTION I. INTRODUCTION	1	
II. REPAIR PARTS LIST	6	
GROUP 00 MOTOR GENERATOR PU-SSA/C	6	1-5
SECTION II. SPECIAL TOOLS LIST (NOT APPLICABLE)		
IV. NATIONAL STOCK NUMBER AND PART NUMBER INDEX	14	

\*This manual supersedes as much of TM 11-6125-226-35, 29 September 1967, as pertains to repair parts and special tools list.

## SECTION I

### INTRODUCTION

#### 1. Scope

This manual lists spares and repair parts; special tools; special test, measurement, and diagnostic equipment (TMDE), and other special support equipment required for performance of direct support and general support maintenance of the PU-33A/C. It authorizes the requisitioning and issue of spares and repair parts as indicated by the source and maintenance codes.

#### 2. General

This Repair Parts and Special Tools List is divided into the following sections:

a. Section II. Repair Parts List. A list of spares and repair parts authorized for use in the performance of maintenance. The list also includes parts which must be removed for replacement of the authorized parts. Parts lists are composed of functional groups in numeric sequence, with the parts in each group listed in figure and item number sequence.

b. Section III. Special Tools List. Not applicable.

c. Section IV. National Stock Number and Part Number Index. A list, in National item identification number (NIIN) sequence, of all National stock numbers (NSN) appearing in the listings, followed by a list, in alphabetic sequence, of all part numbers appearing in the listings. National stock numbers and part numbers are cross-referenced to each illustration figure and item number appearance.

#### 3. Explanation of Columns

a. *Illustration*. This column is divided as follows:

(1) *Figure number*. Indicates the figure number of the illustration on which the item is shown.

(2) *Item number*. The number used to identify item called out in the illustration.

b. *Source, Maintenance, and Recoverability (SMR) Codes*.

(1) *Source code*. Source codes indicate the manner of acquiring support items for maintenance, repair, or overhaul of end items. Source codes are entered in the first and second positions of the Uniform SMR Code format as follows:

<i>Code</i>	<i>Definition</i>
-------------	-------------------

PA—Item procured and stocked for anticipated or known usage.

XD—A support item that is not stocked. When required, item will be procured through normal supply channels.

#### NOTE

Cannibalization or salvage may be used as a source of supply for any items source coded above except those coded XA and aircraft support items as restricted by AR

(2) *Maintenance code*. Maintenance codes are assigned to indicate the levels of maintenance authorized to USE and Repair support items. The maintenance codes are entered in the third and fourth positions of the Uniform SMR Code format as follows:

(a) The maintenance code entered in the third position will indicate the lowest maintenance level authorized to remove, replace, and use the support item. The maintenance code entered in the third position will indicate one of the following levels of maintenance:

<i>Code</i>	<i>Application/Explanation</i>
-------------	--------------------------------

O—Support item is removed, replaced, used at the organizational level.

F—Support item is removed, replaced, used at the direct support level.

H—Support item is removed, replaced, used at the general support level.

(b) The maintenance code entered in the fourth position indicates whether the item is to be repaired and identifies the lowest maintenance level with the capability to perform complete repair (i.e., all authorized maintenance functions). This position will contain one of the following maintenance codes:

<i>Code</i>	<i>Application/Explanation</i>
-------------	--------------------------------

H—The lowest maintenance level capable of complete repair of the support item is the general support level.

Z—Nonreparable. No repair is authorized.

(3) *Recoverability code*. Recoverability codes are assigned to support items to indicate the disposition action on unserviceable items. The recoverability code is entered in the fifth position of the Uniform SMR Code format as follows:

**Recoverability codes**

**Definition**

Z-Nonreparable item. When unserviceable, condemn and dispose at the level indicated in position 3.

H - Reparable item. When uneconomically repairable, condemn and dispose at the general support level.

**c. National Stock Number.** Indicates the National stock number assigned to the item and will be used for requisitioning purposes.

**d. Part Number.** Indicates the primary number used by the manufacturer (individual, company, firm, corporation, or Government activity), which controls the design and characteristics of the item by means of its engineering drawings, specifications, standards, and inspection requirements to identify an item or range of items.

**NOTE**

When a stock numbered item is requisitioned, the repair part received may have a different part number than the part being replaced.

**e. Federal Supply Code for Manufacturer (FSCM).** The FSCM is a 5-digit numeric code listed in SB 708-42 which is used to identify the manufacturer, distributor, or Government agency, etc.

**f. Description.** Indicates the Federal item name and, if required, a minimum description to identify the item.

**g. Unit of Measure (U/M).** Indicates the standard of the basic quantity of the listed item as used in performing the actual maintenance function. This measure is expressed by a two-character alphabetical abbreviation (e.g., ea, in, pr, etc). When the unit of measure differs from the unit of issue, the lowest unit of issue that will satisfy the required units of measure will be requisitioned.

**h. Quantity Incorporated in Unit.** Indicates the quantity of the item used in the breakout shown

on the illustration figure, which is prepared for a functional group, subfunctional group, or an assembly.

**4. Special Information**

The following publications pertain to the PU-33A/C and its components:

- TM 11-6126-226-12, Motor Generator PU-33A/C
- TM 11-6126-226-20P, Motor Generator PU-MA/C
- TM 11-6126-226-35, Motor Generator PU-23A/C

**5. How to Locate Repair Parts**

a. When National Stock Number or Part Number is unknown.

(1) **First.** Using the table of contents, determine the functional group within which the item belongs. This is necessary since illustrations are prepared for functional groups and listings are divided into the same groups.

(2) **Second.** Find the illustration covering the functional group to which the item belongs.

(3) **Third.** Identify the item on the illustration and note the illustration figure and item number of the item.

(4) **Fourth.** using the Repair Parts Listing, find the figure and item number noted on the illustration.

**b. When National stock number or part number is known.**

(1) **First.** Using the Index of National Stock Numbers and Part Numbers, find the pertinent National stock number or part number. This index is in NIIN sequence followed by a list of part numbers in alphameric sequence, cross-referenced to the illustration figure number and item number.

(2) **Second.** After finding the figure and item number, locate the figure and item number in the repair parts list.

**6. Abbreviations**

**Not applicable.**

(Next printed page is 5)

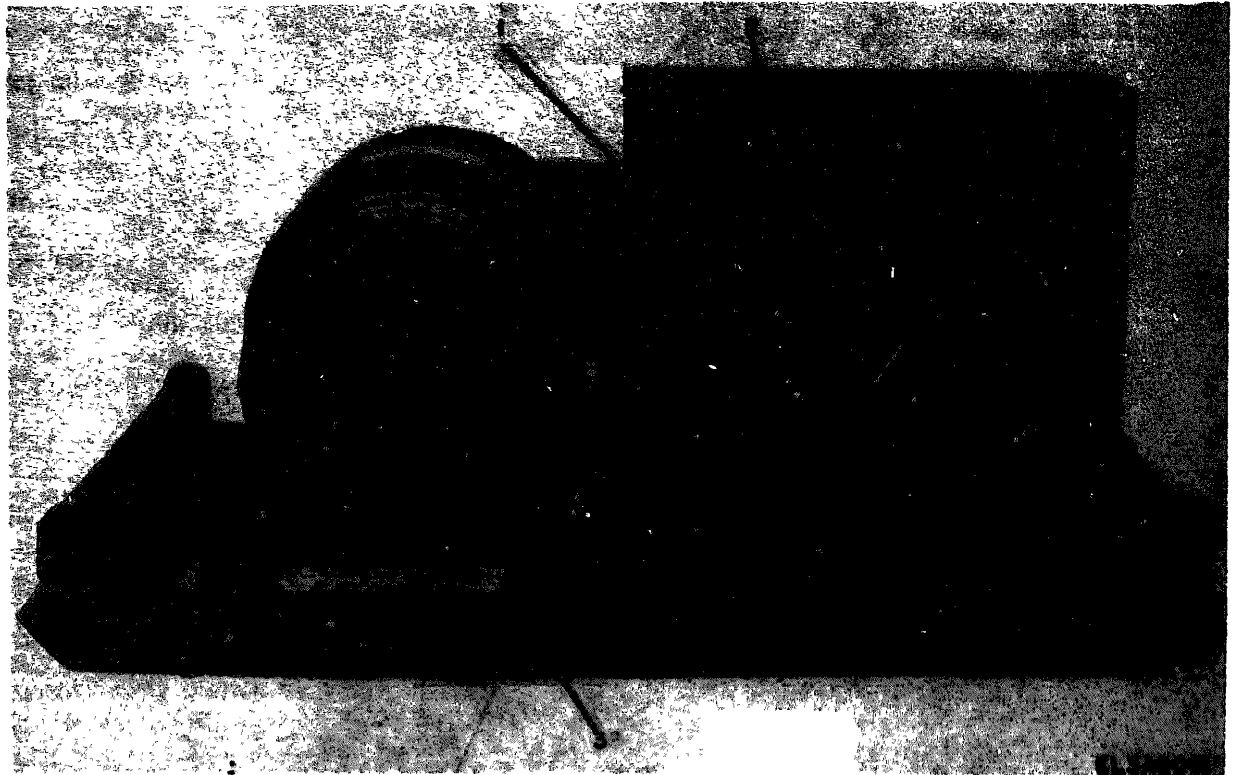


Figure 1. Motor Generator PU-33A/C

(1) ILLUSTRATION		(2)	(3)	(4)	(5)	(6)	(7)	(8)
WG FIG NO.	(2) ITEM NO.	SNR CODE	NATIONAL STOCK NUMBER	PART NUMBER	PSCN	DESCRIPTION	U/L	QTY INC OR UNIT
						GROUP 00 MOTOR GENERATOR PU-33A/C		
	1	XDFPH	6129-00-006-5924	0-16980	07860	CONTROL BOX	EA	1
	2	PAFZZ		129-7878	75377	COVER, ELECTRICAL	EA	1
	3	XDOZZ		125-8175	75377	STRAP, GROUND	EA	1

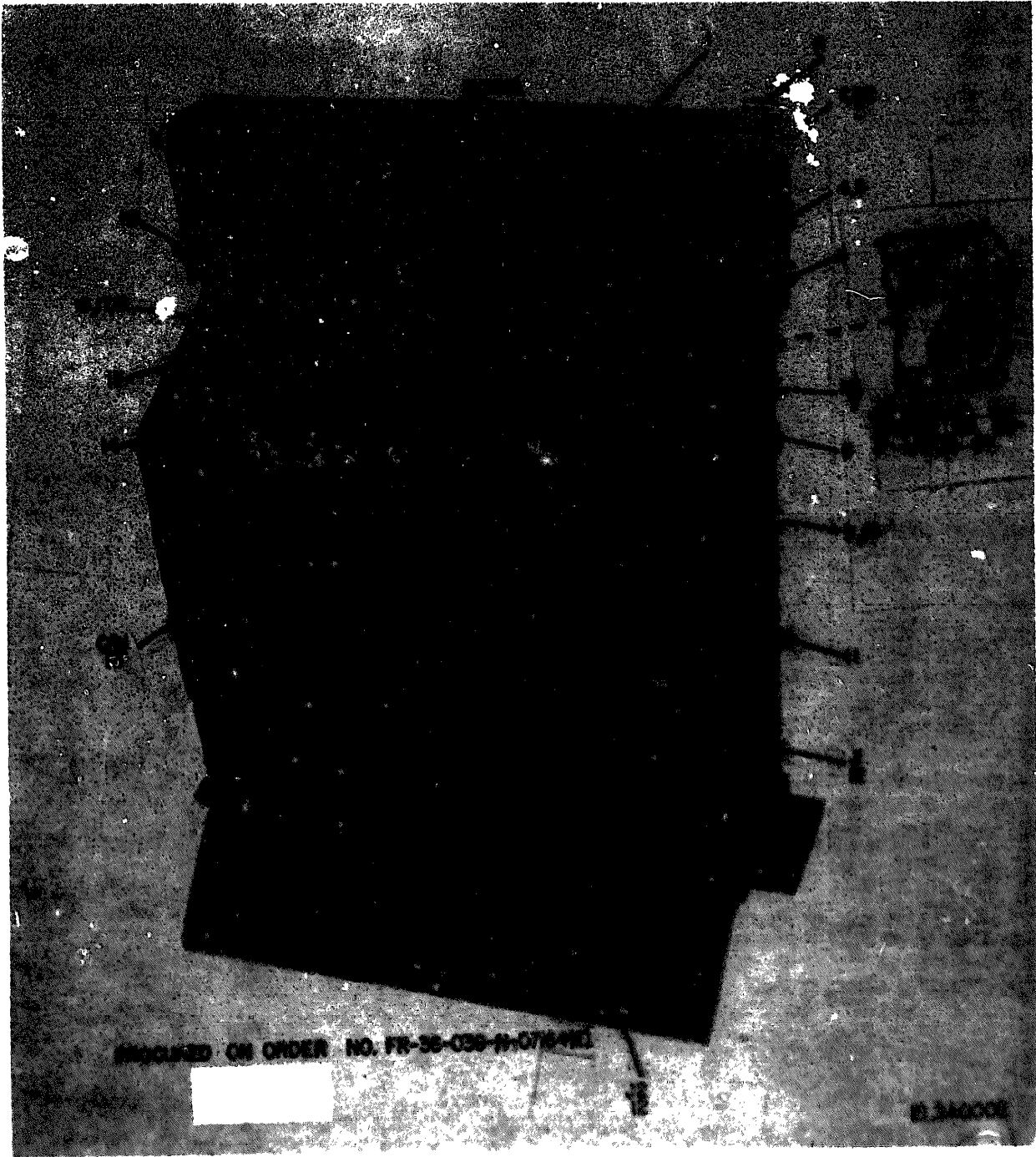


Figure 2. Motor Generator PU-33A/C Control Box (External).

## SECTION II

TM11-6125-226-34P

G1 ILLUSTRATION		G2	G3	G4	G5	G6		G7	G8
FIG NO.	ITEM NO.	QTY CODE	NATIONAL STOCK NUMBER	PART NUMBER	FSCM	DESCRIPTION		U/M	QTY INC IN UNIT
						USABLE QN CODE			
2	1	XDFZZ	5305-00-405-8960	NS38223-13	96906	SCREW		EA	4
2	2	XDFZZ		A-47056	07860	NAMEPLATE, ON-OFF		EA	1
2	3	PAFZZ	5925-00-816-6648	QC1015-40C-400CPS	79900	CIRCUIT BREAKER		EA	1
2	4	XDFZZ	5305-00-543-2192	NS38223-41	96906	SCREW		EA	8
2	5	XDFZZ	5310-00-167-0671	NS38338-302	96906	LOCK WASHER		EA	8
2	6	XDFZZ	5305-00-983-6730	NS38206-218	96906	SCREW		EA	3
2	7	PAFZZ	6625-00-886-3169	210-07353	77221	VOLTMETER, ALTERNATING CURRENT		EA	1
2	8	XDFZZ		D-16978	07860	CONTROL BOX		EA	1
2	9	XDFZZ	5305-00-207-0763	NS38223-28	96906	SCREW		EA	6
2	10	XDFZZ	5310-00-579-0079	NS38333-37	96906	WASHER, INTERNAL TOOTH		EA	6
2	11	XDFZZ		C-23729	07860	FRONT PANEL		EA	1
2	12	PAFZZ	5935-00-812-6799	125-8099	75377	CONNECTOR, RECEPTACLE, ELECTRICAL		EA	2
2	13	XDFZZ		QC101540C28VDC	88725	CIRCUIT BREAKER		EA	1
2	14	XDFZZ		A-047058	07860	NAMEPLATE		EA	1
2	15	XDFZZ		TR-5110	94310	KNOB		EA	1
2	16	XDFZZ		NS38649-42	96906	NUT, HEXAGON		EA	11
2	17	XDFZZ		NS38333-35	96906	WASHER, INTERNAL TOOTH		EA	11
2	18	XDFZZ		NS38223-15	96906	SCREW		EA	8
2	19	XDFZZ		A-47057	07860	NAMEPLATE, CIRCUIT BREAKER		EA	1

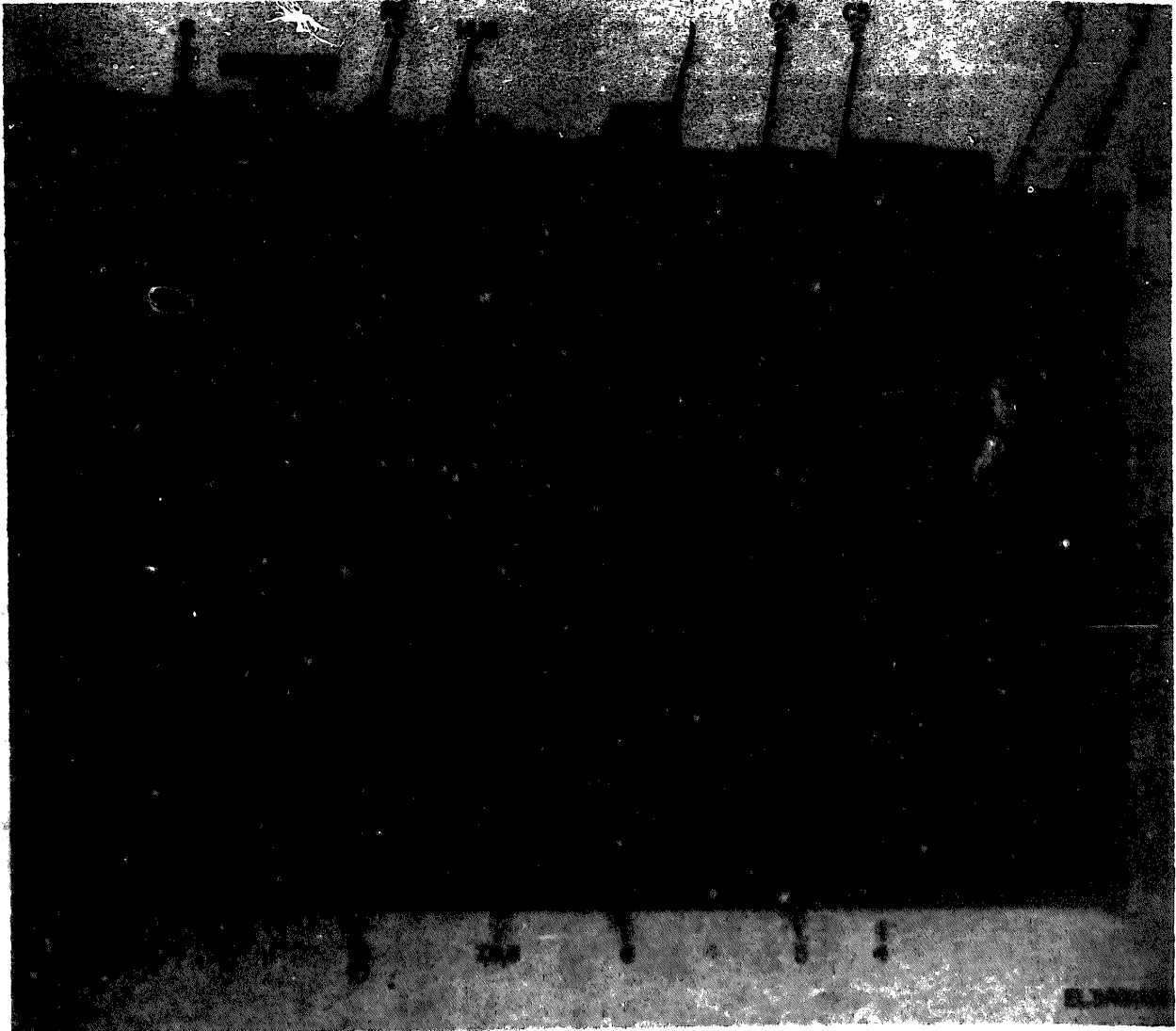


Figure 3. Motor Generator PU-33A/C Control Box (Internal).



## SECTION II

TM11-6125-226-34P

(1) ILLUSTRATION		(2)	(3)	(4)	(5)	(6)	(7)	(8)
FIG. NO.	ITEM NO.	SNR CODE	NATIONAL STOCK NUMBER	PART NUMBER	FOCAL	DESCRIPTION	USABLE ON CODE	QTY INC IN UNIT
3	1	XDFZZ		A-47055	07860	NAMEPLATE		EA 1
3	2	PAFZZ	5910-00-668-1661	NFT1F247	14655	CAPACITOR, FIXED, PAPER		EA 2
3	3	PAFZZ	5910-00-867-4922	NF-10264-1	93790	CAPACITOR, FIXED, PAPER		EA 2
3	4	XDFZZ		1414254	88725	MOUNTING PLATE		EA 2
3	5	XDFZZ	5310-00-013-4530	NS39449-62	96906	NUT, HEXAGON		EA 8
3	6	XDFZZ		6101-4	44655	BRACKET, MOUNTING, RESISTOR		EA 2
3	7	XDFZZ	5306-00-990-6444	NS35207-263	96906	SCREW		EA 2
3	8	XDFZZ	5310-00-596-7691	NS39395-18	96906	WASHER, EXTERNAL TOOTH		EA 2
3	9	XDFZZ	5310-00-934-9751	NS39690-102	96906	NUT, HEXAGON		EA 2
3	10	XDFZZ	5905-00-280-1583	8961	44655	RESISTOR, VARIABLE		EA 1
3	11	XDFZZ		3303 3/4	59730	BUSHING, CABLE		EA 1
3	12	PAFZZ	5975-00-962-9882	223	59730	INSULATING BUSHING		EA 1
3	13	XDFZZ		0444	44655	RESISTOR, VARIABLE		EA 1
3	14	XDFZZ	5305-00-207-0763	NS35223-28	96906	SCREW		EA 14
3	15	XDFZZ	5310-00-579-0079	NS39333-37	96906	WASHER, INTERNAL TOOTH		EA 14

T M 1 1 - 6 1 2 5 - 2 2 6 - 3 4 P

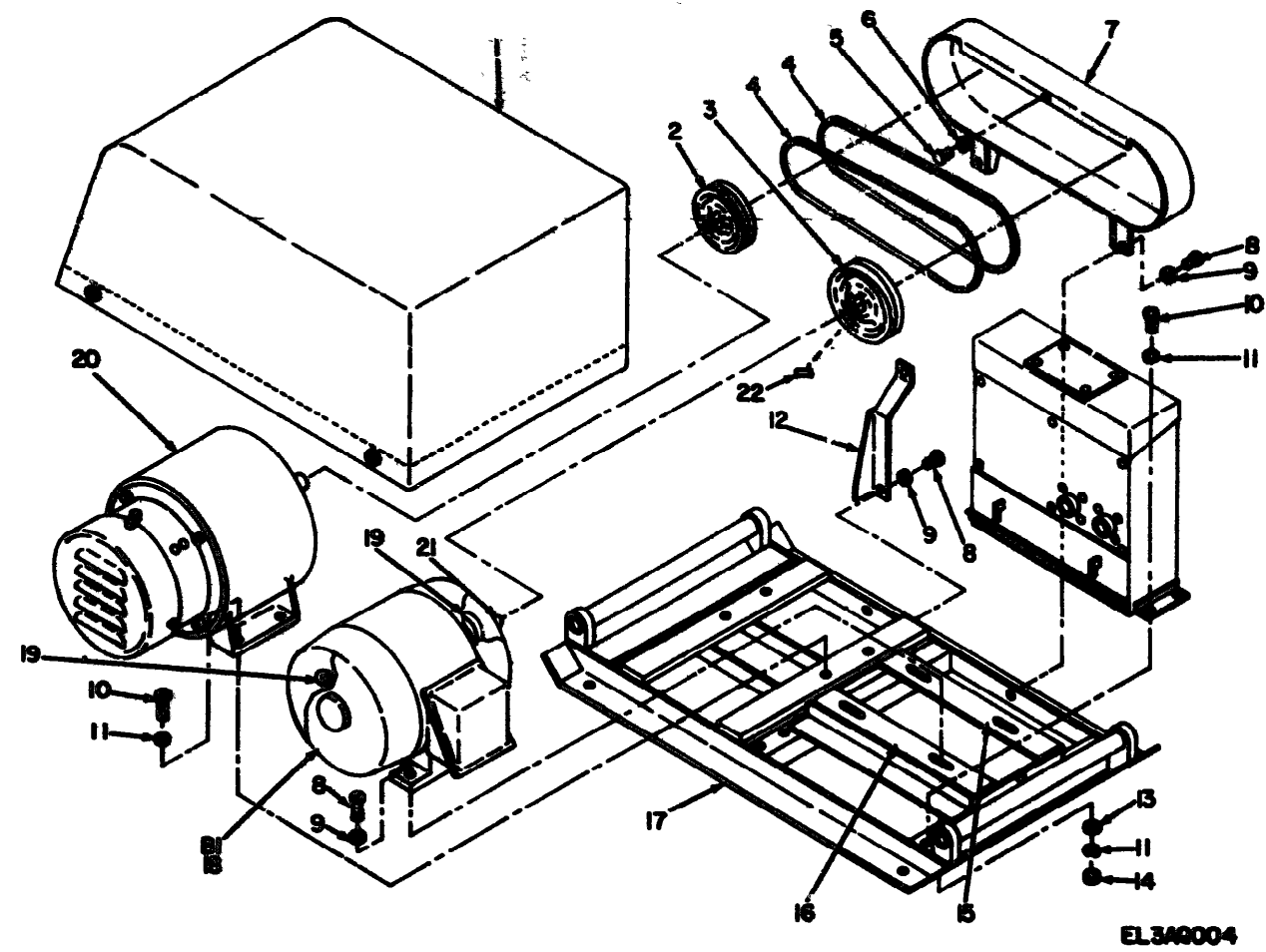
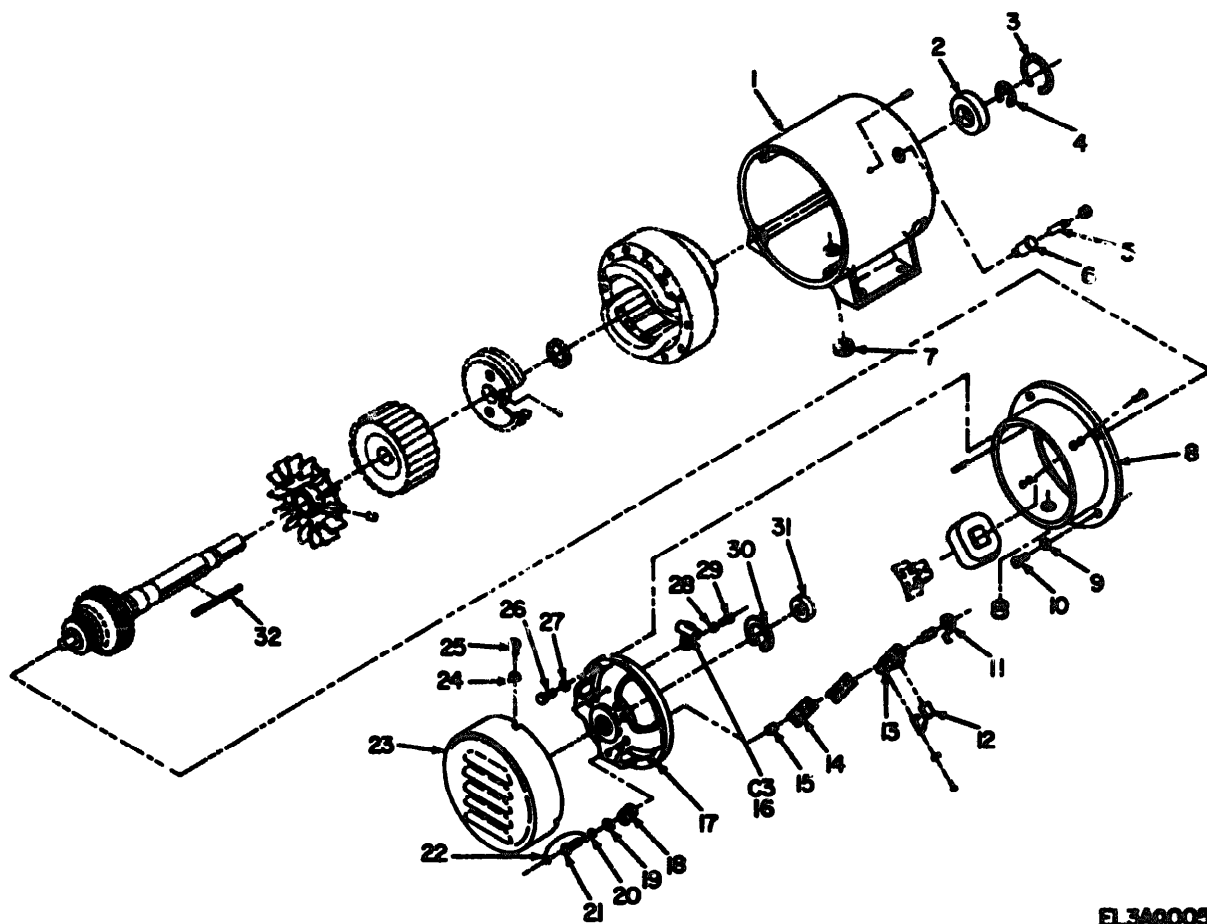


Figure 4. Motor Generator PU-33A/C, Generator

## SECTION II

TM11-6125-226-34P

(1) REMARKS		(2)	(3)	(4)	(5)	(6) DESCRIPTION	(7)	(8)
QTY REQD	QTY STOCK	SNR CODE	NATIONAL STOCK NUMBER	PART NUMBER	PCNN	USABLE ON CODE	U/M	QTY INC IN UNIT
4	1	XDFZZ		C-23737	07060	HOUSING CAP	EA	1
4	2	XDFZZ		02425	76241	PULLEY, GENERATOR	EA	1
4	3	XDFZZ		02500	76241	PULLEY MOTOR	EA	1
4	4	PAGZZ	3030-00-792-9724	A-37	81300	BELT, V	EA	2
4	5	XDFZZ	5305-00-62-1509	MS35224-63	96906	SCREW	EA	1
4	6	XDFZZ	5310-00-045-3296	MS35338-43	96906	LOCK WASHER, SPLIT	EA	1
4	7	XDFZZ		C-22565	07060	GUARD BELT	EA	1
4	8	XDFZZ	5305-00-988-1723	MS35206-279	96906	SCREW	EA	3
4	9	XDFZZ	5310-00-582-5965	MS35338-44	96906	LOCK WASHER, SPLIT	EA	3
3	10	XDFZZ	5305-00-269-3263	MS90725-62	96906	SCREW	EA	6
4	11	XDFZZ	5310-00-637-9541	MS35338-46	96906	LOCK WASHER	EA	8
4	12	XDFZZ		B-32178	07060	BRACE GUARD	EA	1
4	13	XDFZZ	5310-00-809-4061	MS27103-15	96906	FLAT WASHER	EA	8
4	14	XDFZZ		MS35649-602	96906	NUT, HEXAGON	EA	4
4	15	XDFZZ		B-32644-1	07060	ADJUSTING ANGLE	EA	1
4	16	XDFZZ		B-32644-2	07060	ADJUSTING ANGLE	EA	1
4	17	XDFZZ		D-16193	07060	BASE	EA	1
4	18	XDFIN		B-22002	07060	MOTOR, ALTERNATING CURRENT	EA	1
4	19	PAGZZ	5310-00-156-5043	120-03032-4000	96706	BEARING, BALL, ANNULAR	EA	2
4	20	XDFIN		MS230	07060	GENERATOR	EA	1
4	21	PAGZZ	6115-00-982-0030	D-16686	07060	ARMATURE AND ROTOR ASSEMBLY	EA	1
4	22	PAGZZ	53105-00-730-4572	MS20066-146	96906	KEY	EA	1



EL3A9005

Figure 5. Motor Generator PU-33A/C, Exploded View

SECTION II

TM11-6125-226-34P

QUANTITY	UNIT	DESCRIPTION	PART NUMBER	MATERIAL SPEC. NUMBER	QTY	UNIT	REMARKS		
							QTY	UNIT	
9	EA	MOUND FRAME, GENERATOR	C-22907		07860			EA	1
9	EA	BEARING, BALL, ANNULAR	2206-283	9110-00-169-1179	52676			EA	1
9	EA	RETAINING RING	5000-244		79136			EA	1
9	EA	RETAINING RING	5100-118		79136			EA	1
9	EA	BRUSH, ELECTRICAL CONTACT	19-946-114		75377			EA	4
9	EA	BRUSH HOLDER	A13576		07860			EA	6
9	EA	GRONNET	MS35489-106	5325-00-276-6056	96906			EA	1
9	EA	MOUND FRAME	C-22908		07860			EA	1
9	EA	LOCK WASHER, EXTERNAL TOOTH	MS35335-34	5310-00-514-6674	96906			EA	4
9	EA	SCREW	MS90725-32	5306-00-225-8497	96906			EA	4
9	EA	SPRING, HELICAL TORSION	20-954-40	5360-00-754-2314	75377			EA	4
9	EA	BRUSH, ELECTRICAL CONTACT	19-946-116		75377			EA	4
9	EA	HOLDER, BRUSH	A-3642		07860			EA	4
9	EA	INSULATION	A-47041		07860			EA	4
9	EA	BUSHING	A-13347		07860			EA	8
9	EA	CAPACITOR, FIXED, PAPER	97-1280-34		75377			EA	1
9	EA	BRACKET, BEARING	D-16104		07860			EA	1
9	EA	INSULATION	A-47042	5310-00-823-8804	07860			EA	4
9	EA	FLAT WASHER	MS27183-9	5310-00-045-3296	96906			EA	8
9	EA	LOCK WASHER, SPLIT	MS35330-43		96906			EA	8
9	EA	SCREW	MS35224-67	5305-00-993-1851	96906			EA	8
9	EA	JUMPER, BRUSH	A-13714-2		07860			EA	2
9	EA	END COVER	B-32156		07860			EA	1
9	EA	LOCK WASHER	MS35330-41	5310-00-045-4007	96906			EA	3
9	EA	SCREW	MS35223-26	5305-00-637-7079	96906			EA	3
9	EA	SCREW	MS90725-6	5305-00-068-0502	96906			EA	4
9	EA	LOCK WASHER, EXTERNAL TOOTH	MS35335-33	5310-00-209-0786	96906			EA	4
9	EA	LOCK WASHER, INTERNAL TOOTH	MS35333-39	5310-00-576-5752	96906			EA	1
9	EA	SCREW	MS35223-15	5305-00-638-3438	96906			EA	1
9	EA	RETAINING RING	79136	5365-00-840-7838	79136			EA	1
9	EA	BEARING, BALL, ANNULAR	52676	3110-00-109-1155	52676			EA	1
9	EA	KEY	96906	5315-00-729-6992	96906			EA	1

SECTION IV

**NATIONAL STOCK NUMBER AND PART NUMBER INDEX**  
**NATIONAL STOCK NUMBER AND PART NUMBER ASSIGNMENTS ARE INCLUDED AT END OF INDEX**

TM11-6125-226-34P

	FIGURE NO.	ITEM NO.		FIGURE NO.	ITEM NO.
5310-00-013-4530	3	5	5310-00-637-9541	4	11
5310-00-005-3296	4	6	5305-00-638-3438	2	18
5310-00-045-3296	5	20	5305-00-638-3438	5	29
5310-00-045-4007	5	24	5910-00-667-4922	3	3
3110-00-109-1155	5	31	5910-00-668-1661	3	2
3110-00-109-1179	5	2	5310-00-722-5284	2	16
3110-00-156-5043	4	19	3315-00-790-4572	4	22
5305-00-207-0763	4	9	5360-00-754-2314	5	11
5905-00-207-0763	3	9	3030-00-792-9724	5	11
5905-00-280-1583	3	14	5310-00-809-4061	4	4
5305-00-543-2192	2	10	5935-00-812-6799	4	13
5310-00-576-5752	2	4	5310-00-823-8804	2	12
5310-00-579-0079	5	28	6625-00-086-3169	5	19
5310-00-579-0079	2	10	6125-00-086-5924	2	7
5310-00-582-5965	3	15	5310-00-934-9751	1	2
5310-00-596-7691	4	9	5975-00-962-9882	3	9
5305-00-637-7079	5	25	6115-00-982-0030	3	12
				4	21

PART NUMBER	FSCM	FIG. NO.	ITEM NO.	PART NUMBER	FSCM	FIG. NO.	ITEM NO.
A-047058	07860	2	14				
A-13347	07860	5	15				
A-13714-2	07860	5	22				
A-3642	07860	5	13	MS35333-36	96906	2	17
A-37	81300	4	4	MS35333-37	96906	2	10
A-47041	07860	5	14	MS35333-37	96906	3	19
A-47042	07860	5	18	MS35333-39	96906	3	28
A-47055	07860	3	2	MS35333-18	96906	3	8
A-47056	07860	2	2				
A-47057	07860	2	19				
A-13576	07860	5	6				
B-22082	07860	4	18	MS35338-41	96906	5	24
B-32156	07860	5	23	MS35338-43	96906	4	6
B-32178	07860	4	12	MS35338-43	96906	4	6
B-32644-f	07860	4	15	MS35338-44	96906	4	9
8-32644-2	07860	4	16	MS35338-46	96906	4	11
C-22565	07860	4	7	MS35489-106	96906	2	17
C-22907	07860	5	1	MS35649-42	96906	2	16
C-22908	07860	5	8	MS35649-602	96906	4	14
C-23729	07860	2	11	MS35649-62	96906	3	5
C-23737	07860	4	1	MS35650-102	96906	3	9
D-16184	07860	5	17	NF-10264-1	93790	3	3
D-16193	07860	4	17	NFTIF247	14655	3	2
D-16686	07860	4	21				
D-16890	07860	1	1	QC101540C28VDC	88725	2	13
D2425	76241	4	2	TR-5110	94310	4	15
D2500	76241	4	3	0444	44655	3	13
MS20066-146	96906	4	22	0561	44655	3	10
MS230	07860	4	20	120-03032-4000	96906	4	19
MS271823-15	96906	4	13	125-7878	75377	2	2
MS35223-13	96906	5	19	125-8099	75377	2	12
MS35223-15	96906	2	1	1614256	88725	3	4
MS35223-15	96906	2	18	19-946-114	75377	5	5
MS35223-41	96906	5	29	19-946-116	75377	5	12
MS35223-26	96906	5	25	20-954-40	75377	5	11
MS35223-28	96906	5	9	210-07353	77221	2	7
MS35223-28	96906	3	14	223	59730	3	12
MS35223-41	96906	2	4	3303 3/4	59730	3	11
				5000-244	79136	5	4
				5100-198	79136	5	4
				5100-66	79136	5	30
				6101-4	44655	3	6
				6205-2RS	52676	3	31
				62062RS	52676	5	2
MS35224-63	96906	4	5	97-1280-34	75377	5	16
MS35223-67	96906	5	21				

**LATEST NATIONAL STOCK NUMBER ASSIGNMENTS**

STOCK NUMBER	FIGURE NO.	ITEM NO.
5305-00-068-0502	5	26
5310-00-167-0671	2	5
5310-00-193-7577	2	17
5310-00-209-0786	5	27
5306-00-225-8497	5	10
5305-00-296-3213	4	10
5325-00-276-6056	5	7
5305-00-405-8960	2	1
5310-00-514-6674	5	9
5305-00-662-1509	4	5
5315-00-729-6992	5	32
5925-00-816-6648	2	3
5365-00-840-7818	5	30
5305-00-983-6730	2	6
5305-00-988-1723	4	8
5305-00-990-6444	3	7
5305-00-993-1851	5	21

**LATEST PART NUMBER ASSIGNMENTS**

PART NUMBER	FSCN	NO.	NO.
D-16978	07860	2	8
MS20066-235	96906	5	32
MS35206-218	96906	2	6
MS35206-279	96906	4	8
MS35207-261	96906	3	7
MS35335-33	96906	5	27
MS35335-34	96906	5	9
MS35338-102	96906	2	5
MS90725-32	96906	5	10
MS90725-62	96906	4	10
MS90725-6	96906	5	26
QC1015-40C-400CPS	79500	2	3
125-8175	75377	1	3





RECOMMENDED CHANGES TO EQUIPMENT TECHNICAL MANUALS



# SOMETHING WRONG WITH THIS MANUAL?

THEN... JOT DOWN THE DOPE ABOUT IT ON THIS FORM, TEAR IT OUT, FOLD IT AND DROP IT IN THE MAIL!

FROM: (YOUR UNIT'S COMPLETE ADDRESS)

DATE

PUBLICATION NUMBER

DATE

TITLE

BE EXACT... PIN-POINT WHERE IT IS

IN THIS SPACE TELL WHAT IS WRONG AND WHAT SHOULD BE DONE ABOUT IT:

PAGE NO.	PARA-GRAPH	FIGURE NO.	TABLE NO.
----------	------------	------------	-----------

TEAR ALONG DOTTED LINE

TYPED NAME, GRADE OR TITLE, AND TELEPHONE NUMBER

SIGN HERE:

DA FORM 2028-2 (TEST)  
1 AUG 74

P.S.--IF YOUR OUTFIT WANTS TO KNOW ABOUT YOUR MANUAL "FIND" MAKE A CARBON COPY OF THIS AND GIVE IT TO YOUR HEADQUARTERS.

RECOMMENDED CHANGES TO EQUIPMENT TECHNICAL MANUALS



# SOMETHING WRONG WITH THIS MANUAL?

THEN... JOT DOWN THE DOPE ABOUT IT ON THIS FORM, TEAR IT OUT, FOLD IT AND DROP IT IN THE MAIL!

FROM: (YOUR UNIT'S COMPLETE ADDRESS)

DATE

PUBLICATION NUMBER

DATE

TITLE

EXACT... PIN-POINT WHERE IT IS

IN THIS SPACE TELL WHAT IS WRONG AND WHAT SHOULD BE DONE ABOUT IT:

PAGE NO.	PARA-GRAPH	FIGURE NO.	TABLE NO.
----------	------------	------------	-----------

TYPED NAME, GRADE OR TITLE, AND TELEPHONE NUMBER

SIGN HERE:

DA FORM 2028-2 (TEST)  
1 AUG 74

P.S.--IF YOUR OUTFIT WANTS TO KNOW ABOUT YOUR MANUAL "FIND," MAKE A CARBON COPY OF THIS AND GIVE IT TO YOUR HEADQUARTERS.

RECOMMENDED CHANGES TO EQUIPMENT TECHNICAL MANUALS



THEN... JOT DOWN THE DOPE ABOUT IT ON THIS FORM, TEAR IT OUT, FOLD IT AND DROP IT IN THE MAIL!

**SOMETHING WRONG WITH THIS MANUAL?**

FROM: (YOUR UNIT'S COMPLETE ADDRESS)

Commander  
Stateside Army Depot  
ATTN: AMSTA-US  
Stateside, N.J. 07703

DATE 10 July 1975

PUBLICATION NUMBER

TM 11-5840-340-12

DATE

23 Jan 74

TITLE

Radar Set AN/SPC-76

BE EXACT... PIN-POINT WHERE IT IS

PAGE NO.	PARA-GRAPH	FIGURE NO.	TABLE NO.
----------	------------	------------	-----------

2-25	2-28		
3-10	3-3		3-1
5-6	5-8		

FO3

IN THIS SPACE TELL WHAT IS WRONG AND WHAT SHOULD BE DONE ABOUT IT:

Recommend that the installation antenna alignment procedure be changed through to specify a 2° IFF antenna lag rather than 1°.

REASON: Experience has shown that with only a 1° lag, the antenna servo system is too sensitive to wind gusting in excess of 27 knots, and has a tendency to rapidly accelerate and decelerate as it hunts, causing strain to the drive train. Hunting is minimized by adjusting the lag to 2° without degradation of operation.

Item 5, Function column. Change "2 db" to "3db."

REASON: The adjustment procedure for the TRANS POWER FAULT indicator calls for a 3 db (500 watts) adjustment to light the TRANS POWER FAULT indicator.

Add new step f.1 to read, "Replace cover plate removed in step e.1, above."

REASON: To replace the cover plate.

Zone C 3. On J1-2, change "+24 VDC to "+5 VDC."

REASON: This is the output line of the 5 VDC power supply. + 24 VDC is the input voltage.

TYPED NAME, GRADE OR TITLE, AND TELEPHONE NUMBER

SSG I. M. DeSpirito 999-1776

SIGN HERE:

*SSG I. M. DeSpirito*

DA FORM 2028-2 (TEST)

1 AUG 74

P.S.--IF YOUR OUTFIT WANTS TO KNOW ABOUT YOUR MANUAL "FIND" MAKE A CARBON COPY OF THIS AND GIVE IT TO YOUR HEADQUARTERS.

HISA 1686-75

TEAR ALONG DOTTED LINE

**By Order of the Secretary of the Army:**

**Official:**

**PAUL T. SMITH**  
*Major General, United States Army*  
*The Adjutant General*

**BERNARD W. ROGERS**  
*General, United States Army*  
*Chief of Staff*

**DISTRIBUTION:**

*Active Army:*

USASA (2)  
COE (1)  
TSG (1)  
USAARENBD (1)  
DARCOM (1)  
TECOM (2)  
TRADOC (2)  
USACC (4)  
OS Maj Comd (4)  
MDW (1)  
Armies (2)  
Corps (2)  
Instl (2) except  
  Ft Gillem (10)  
  Ft Gordon (10)  
  Ft Huachuca (10)  
  Ft Carson (5)  
  SAAD (30)  
  LBAD (14)  
  TOAD (14)  
  SHAD (3)  
  HISA (Ft Monmouth) (33)

Ft Richardson (ECOM Ofc) (2)  
Svc Colleges (1)  
USAICS (3)  
USASATC&S (2)  
USAADS (2)  
USAFAS (2)  
USAARMS (2)  
USAIS (2)  
USAES (2)  
MAAG (1)  
USARMIS (1)  
USAERDAA (1)  
USAERDAW (1)  
Sig FLDMS (1)  
Units org under fol TOE:- 1 ea.  
  11-97  
  11-98  
  11-117  
  11-127  
  11-500(AA-AC)  
  32-57  
  32-500

*ARNG & USAR: None.*

For explanation of abbreviations, used, see AR 310-50.

DEPARTMENT OF THE ARMY  
US ARMY AG PUBLICATIONS CENTER  
1655 WOODSON ROAD  
ST. LOUIS, MISSOURI 63114  
OFFICIAL BUSINESS  
PENALTY FOR PRIVATE USE \$300

POSTAGE AND FEES PAID  
DEPARTMENT OF THE ARMY  
DOD 314



FILL IN YOUR  
UNIT'S ADDRESS

FOLD BACK

DEPARTMENT OF THE ARMY

OFFICIAL BUSINESS

PENALTY FOR PRIVATE USE, \$300

POSTAGE AND FEES PAID  
DEPARTMENT OF THE ARMY  
DOD-314



Commander  
US Army Electronics Command  
ATTN: DRSEL-MA-Q  
Fort Monmouth, New Jersey 07703

FOLD BACK

TEAR ALONG DOTTED LINE

REVERSE OF DA FORM 2026-2 (TEST)

FILL IN YOUR  
UNIT'S ADDRESS

FOLD BACK

DEPARTMENT OF THE ARMY

\_\_\_\_\_  
\_\_\_\_\_

OFFICIAL BUSINESS

PENALTY FOR PRIVATE USE, \$300

POSTAGE AND FEES PAID  
DEPARTMENT OF THE ARMY  
DOD-314



Commander  
US Army Electronics Command  
ATTN: DRSEL-MA-Q  
Fort Monmouth, New Jersey 07703

FOLD BACK

TEAR ALONG DOTTED LINE

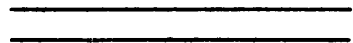
REVERSE OF DA FORM 2025-2 (TEST)

FILL IN YOUR  
UNIT'S ADDRESS



FOLD BACK

DEPARTMENT OF THE ARMY



OFFICIAL BUSINESS

PENALTY FOR PRIVATE USE, \$300

POSTAGE AND FEES PAID  
DEPARTMENT OF THE ARMY  
DOD-314



Commander  
US Army Electronics Command  
ATTN: DRSEL-MA-Q  
Fort Monmouth, New Jersey 07703

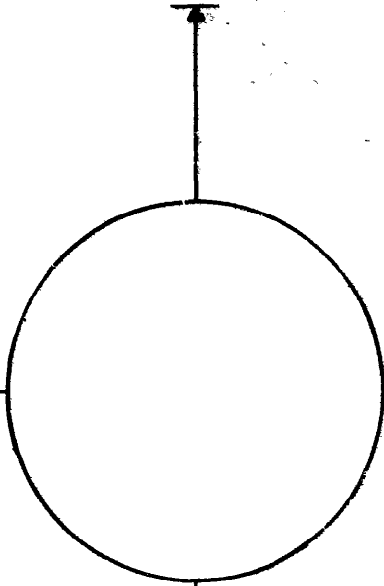
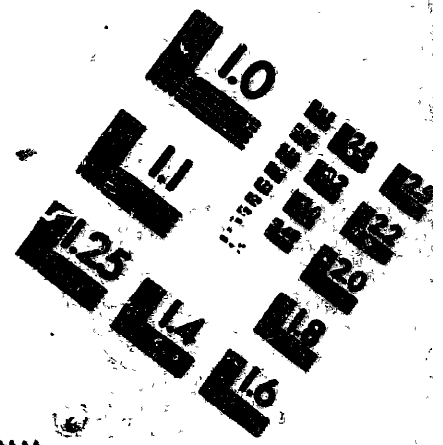
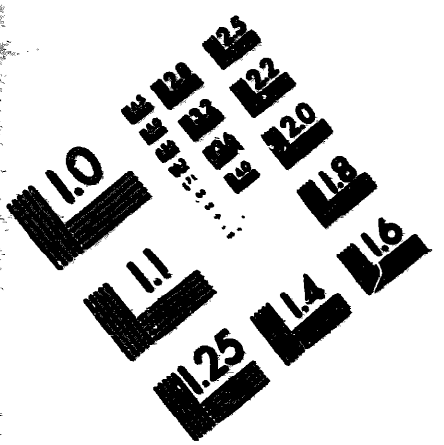
TEAR ALONG DOTTED LINE

FOLD BACK



DEPARTMENT OF THE ARMY

MICROFORM TEST TARGET



150 MM

1.0 mm (e= .81 mm)

ABCDEFGHIJKLMN OPQRSTUVWXYZ 1234567890  
abcdefghijklmnopqrstuvwxyz %& / % # 1/2 1/4 3/4 —→ + x & @ \*

1.5 mm (e= 1.09 mm)

ABCDEFGHIJKLMN OPQRSTUVWXYZ 1234567890  
abcdefghijklmnopqrstuvwxyz %& / % # 1/2 1/4 3/4 —→ + x & @ \*

2.0 mm (e= 1.37 mm)

ABCDEFGHIJKLMN OPQRSTUVWXYZ  
abcdefghijklmnopqrstuvwxyz  
1234567890 \$ % & / % # 1/2 1/4 3/4 —→ + x & @ \*

2.5 mm (e= 1.77 mm)

ABCDEFGHIJKLMN OPQRSTUVWXYZ  
abcdefghijklmnopqrstuvwxyz  
1234567890 \$ % & / % # 1/2 1/4 3/4 —→ + x & @ \*

1.0 mm (e= .81 mm)

ABCDEFGHIJKLMN OPQRSTUVWXYZ 1234567890  
abcdefghijklmnopqrstuvwxyz %& / % # 1/2 1/4 3/4 —→ + x & @ \*

1.5 mm (e= 1.09 mm)

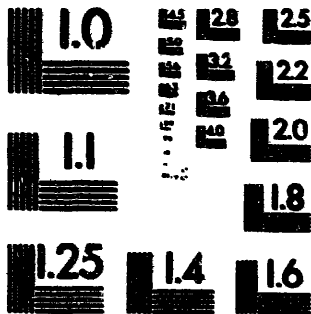
ABCDEFGHIJKLMN OPQRSTUVWXYZ 1234567890  
abcdefghijklmnopqrstuvwxyz %& / % # 1/2 1/4 3/4 —→ + x & @ \*

2.0 mm (e= 1.37 mm)

ABCDEFGHIJKLMN OPQRSTUVWXYZ  
abcdefghijklmnopqrstuvwxyz  
1234567890 \$ % & / % # 1/2 1/4 3/4 —→ + x & @ \*

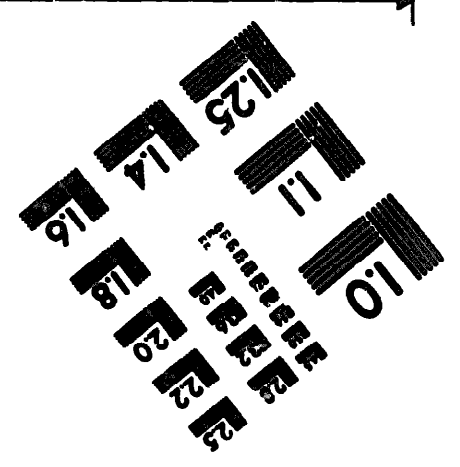
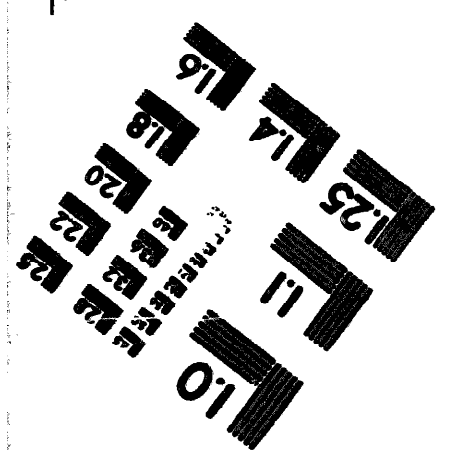
2.5 mm (e= 1.77 mm)

ABCDEFGHIJKLMN OPQRSTUVWXYZ  
abcdefghijklmnopqrstuvwxyz  
1234567890 \$ % & / % # 1/2 1/4 3/4 —→ + x & @ \*



200 MM

250 MM



**END**

**7-25-83**

**DATE**



